

Elledue
ELECTROMEDICAL EQUIPMENT COMPONENTS



GENERAL CATALOG

www.elleduesnc.eu



OUR **PRODUCTS**

Our products are created for satisfy all necessity of command signalling and request for assistance in patient wards for hospital, clinics and old-people's home. Available in a wide range of version and accessories insertable on lighting hospital equipment, in the patient wards or reanimation, our hand-set are the optimum solution for all needs of each bed place.

OUR COMPANY

Since 1999 our company produce electromedical equipment components. Starting from a strictly Italian market, we had expanded our operations across Europe acquiring more experience in this sector and improving the quality of our products. The collaboration with our customers and the daily challenge to satisfy their varied demands and requirements has become for us our business philosophy.





400 series

This model is the smallest of our hand-sets, it is equipped with 2 meters long wire and only one pushbutton with the possibility to have different serigraphies*. Like all the our hand-sets it can be equipped with different connectors.

USE AND DESCRIPTION

Hand-set for assistance request in patients ward for hospitals, clinics and old people's homes.

It can be used, changing the symbology of the button, also for other commands, us for instance turn on the visit light, ambient light or other functions with different serigrafies on request.

Polycarbonate body, seats lowered staying buttons and switches to avoid switchings or calls due to accidental touches on the hand-set, safety plugs on the closing's screws to avoid tamperings from the end-users and tampographical signaling on the pushbuttons with symbologies studied for an easy interpretation.

Nominal power supply	12V/24V AC
Max current	6A
Protection degree	IP 43
Max temperature	85° C
Electrical cycles	100.000





1400 series

This serie, similar to the serie 400 but bigger for dimensions, is equipped with 2 meters long wire and only one pushbutton with the possibility to have different serigraphies*. Like all the our hand-sets it can be equipped with different connectors and with led diode for the reassurance for maked call.

USE AND DESCRIPTION

Hand-set for assistance request in patients ward for hospitals, clinics and old people's homes.

It can be used, changing the simbology of the button, also for other commands, us for instance turn on the visit light, ambient light or other functions with different serigrafies on request.

Polycarbonate body, seats lowered staying buttons and switches to avoid switchings or calls due to accidental touches on the hand-set, safety plugs on the closing's screws to avoid tamperings from the end-users and tampographical signaling on the pushbuttons with symbologies studied for an easy interpretation.

Nominal power supply	12V/24V AC
Max current	6A
Protection degree	IP 43
Max temperature	85° C
Electrical cycles	100.000





2400 series

The 2400 series is equipped with 2 meters long wire and only one micro pushbutton for the nurse call.

The micro pushbutton can be connected in three different ways :

- NO (Normally Open)
- NC (Normally Closed)
- NO+NC (Normally Closed in exchange)

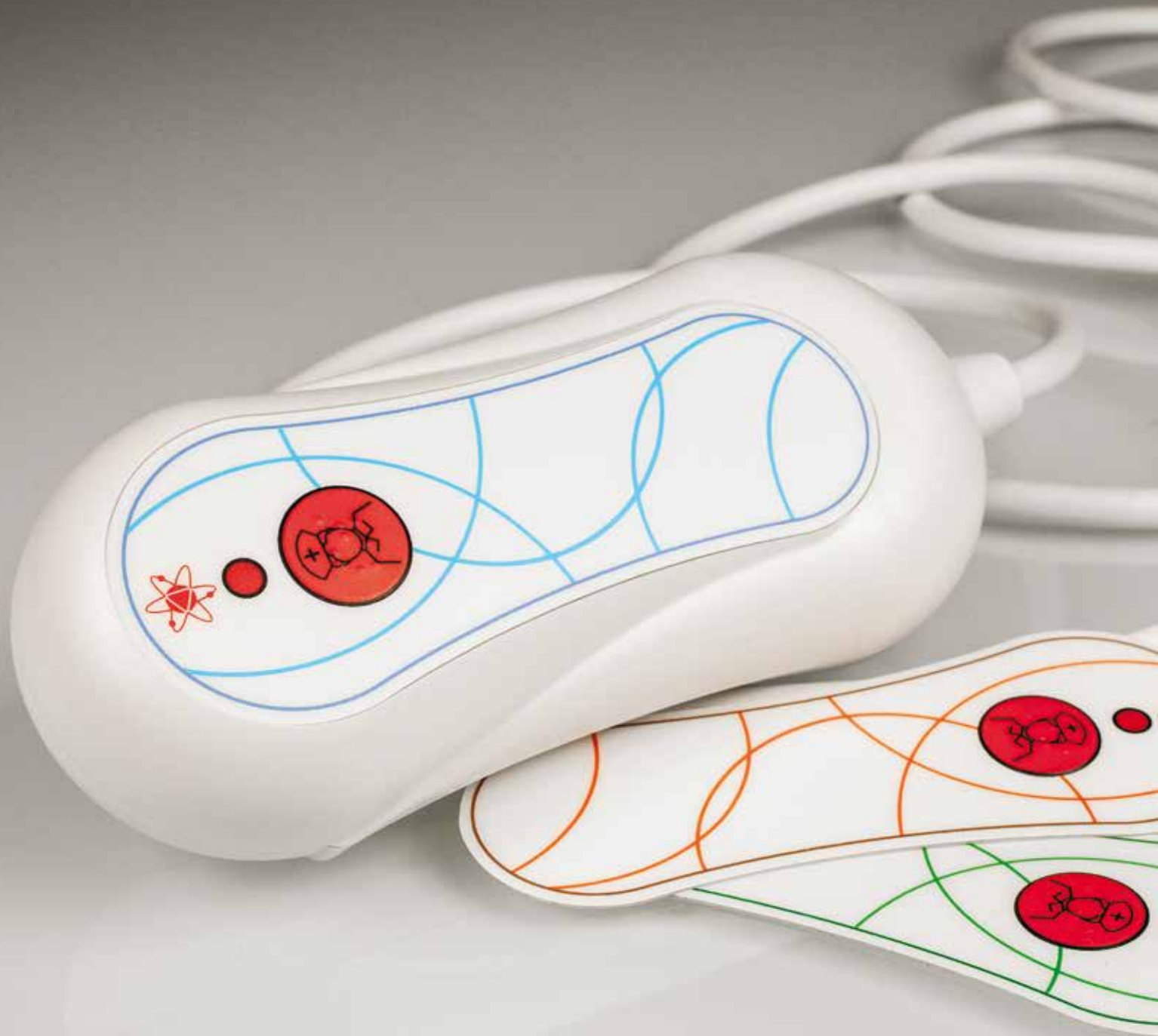
Like all our hand-sets it can be equipped with different connectors and with led diode for the reassurance for maked call.

USE AND DESCRIPTION

Hand-set with one key to assistance request in patients ward for hospitals, clinics and old people's homes.

Polycarbonate body, closing's screws not visibles to avoid tamperings from the end-users and segnalation throught membrane drawn with symbologies studied for an easier interpretation. Ergonomic design for an easier grip and cleaning.

Nominal power supply	12V/24V AC
Max current	1A
Protection degree	IP 54
Max temperature	85° C
Electrical cycles	100.000



3400 series

The 3400 series is equipped with 2 meters long wire and only one micro pushbutton for the nurse call.

The micro pushbutton can be connected in three different ways:

- NO (Normally Open)
- NC (Normally Closed)
- NO+NC (Normally Closed in exchange)

Like all our hand-sets it can be equipped with different connectors and with led diode for the reassurance for maked call. Differently from the other han-sets, with the serie 3400, you can choose the color of the membrane: green, blue or orange are standard; on request we can consider other colors.

USE AND DESCRIPTION

Hand-set with one key to assistance request in patients ward for hospitals, clinics and old people's homes. Polycarbonate body, closing's screws not visibles to avoid tamperings from the end-users and segnalation throught membrane drawn with symbologies studied for an easier interpretation. Ergonomic design for an easier grip and cleaning.

Nominal power supply	12V/24V AC
Max current	1A
Protection degree	IP 67
Max temperature	85° C
Electrical cycles	100.000



500 series

The 500 series is equipped with 2 meters long wire and two pushbuttons with the possibility to have different serigraphies*.

Like all the our hand-sets it can be equipped with different connectors and with led diode for the reassurance for maked call.

USE AND DESCRIPTION

Hand-set with two commands, one for the assistance request in patients ward for hospitals, clinics and old people's homes and one for the lighting of the light. It can be used, changing the simbologies of the buttons, also for other commands, us for instance turn on the ambient light or other functions with different serigrafies on request.

Polycarbonate body, seats lowered staying buttons and switches to avoid switchings or calls due to accidental touches on the hand-set, safety plugs on the closing's screws to avoid tamperings from the end-users and tampographical signaling on the pushbuttons with symbologies studied for an easy interpretation.

Nominal power supply	12V/24V AC
Max current	6A
Protection degree	IP 43
Max temperature	85° C
Electrical cycles	100.000





1500 series

The 1500 series is equipped with 2 meters long wire and two pushbuttons with the possibility to have different serigraphies*.

Like all the our hand-sets it can be equipped with different connectors and with led diode for the reassurance for maked call.

USE AND DESCRIPTION

Hand-set with two commands, one for the assistance request in patients ward for hospitals, clinics and old people's homes and one for the lighting of the light. It can be used, changing the simbologies of the buttons, also for other commands, us for instance turn on the ambient light or other functions with different serigrafies on request.

Polycarbonate body, seats lowered staying buttons and switches to avoid switchings or calls due to accidental touches on the hand-set, safety plugs on the closing's screws to avoid tamperings from the end-users and tampographical signaling on the pushbuttons with symbologies studied for an easy interpretation.

Nominal power supply	12V/24V AC
Max current	6A
Protection degree	IP 43
Max temperature	85° C
Electrical cycles	100.000





2500 series

The 2500 series is equipped with 2 meters long wire and two micro pushbuttons, one for the nurse call and one for the lighting of the light.

The micro pushbuttons can be connected in three different ways:

- NO (Normally Open)
- NC (Normally Closed)
- NO+NC (Normally Closed in exchange)

Like all our hand-sets it can be equipped with different connectors and with led diode for the reassurance for maked call.

USE AND DESCRIPTION

Hand-set with two commands, one for the assistance request in patients ward for hospitals, clinics and old people's homes and one for the lighting of the light. Polycarbonate body, closing's screws not visibles to avoid tamperings from the end-users and segnalation throught membrane drawn with symbologies studied for an easier interpretation. Ergonomic design for an easier grip and cleaning.

Nominal power supply	12V/24V AC
Max current	1A
Protection degree	IP 54
Max temperature	85° C
Electrical cycles	100.000



3500 series

The 3500 series is equipped with 2 meters long wire and two micro pushbuttons, one for the nurse call and one for the lighting of the light.

The micro pushbutton can be connected in three different ways:

- NO (Normally Open)
- NC (Normally Closed)
- NO+NC (Normally Closed in exchange)

Like all our hand-sets it can be equipped with different connectors and with led diode for the reassurance for maked call. Differently from the other han-sets, with the serie 3500, you can choose the color of the membrane: green, blue or orange are standard; on request we we can consider other colors.

USE AND DESCRIPTION

Hand-set with two commands, one for the assistance request in patients ward for hospitals, clinics and old people's homes and one for the lighting of the light. Polycarbonate body, closing's screws not visibles to avoid tamperings from the end-users and segnalation throught membrane drawn with symbologies studied for an easier interpretation. Ergonomic design for an easier grip and cleaning.

Nominal power supply	12V/24V AC
Max current	1A
Protection degree	IP 67
Max temperature	85° C
Electrical cycles	100.000



550 series

The 550 series is equipped with 2 meters long wire and three pushbuttons with the possibility to have different serigraphies*.

Like all the our hand-sets it can be equipped with different connectors and with led diode for the reassurance for maked call.

USE AND **DESCRIPTION**

Hand-set with three commands, one for the assistance request in patients ward for hospitals, clinics and old people's homes and two for the lightings of the visit light and ambient light.

It can be used, changing the simbologies of the buttons, also for other commands or functions with different serigrafies on request.

Polycarbonate body, seats lowered staying buttons and switches to avoid switchings or calls due to accidental touches on the hand-set, safety plugs on the closing's screws to avoid tamperings from the end-users and tampographical signaling on the pushbuttons with symbologies studied for an easy interpretation.

Nominal power supply	12V/24V AC
Max current	6A
Protection degree	IP 43
Max temperature	85° C
Electrical cycles	100.000





1550 series

The 1550 series is equipped with 2 meters long wire and three pushbuttons with the possibility to have different serigraphies*.

Like all the our hand-sets it can be equipped with different connectors and with led diode for the reassurance for maked call.

USE AND DESCRIPTION

Hand-set with three commands, one for the assistance request in patients ward for hospitals, clinics and old people's homes and two for the lightings of the visit light and ambient light.

It can be used, changing the simbologies of the buttons, also for other commands or functions with different serigrafies on request.

Polycarbonate body, seats lowered staying buttons and switches to avoid switchings or calls due to accidental touches on the hand-set, safety plugs on the closing's screws to avoid tamperings from the end-users and tampographical signaling on the pushbuttons with symbologies studied for an easy interpretation.

Nominal power supply	12V/24V AC
Max current	6A
Protection degree	IP 43
Max temperature	85° C
Electrical cycles	100.000





2550 series

The 2550 series is equipped with 2 meters long wire and three micro pushbuttons, one for the nurse call and two for the lightings of the lights.

The micro pushbuttons can be connected in three different ways:

- NO (Normally Open)
- NC (Normally Closed)
- NO+NC (Normally Closed in exchange)

Like all our hand-sets it can be equipped with different connectors and with led diode for the reassurance for maked call.

USE AND DESCRIPTION

Hand-set with three commands, one for the assistance request in patients ward for hospitals, clinics and old people's homes and two for the lightings of the visit light and ambient light.

Polycarbonate body, closing's screws not visibles to avoid tamperings from the end-users and segnalation throught membrane drawn with symbologies studied for an easier interpretation. Ergonomic design for an easier grip and cleaning.

Nominal power supply	12V/24V AC
Max current	1A
Protection degree	IP 54
Max temperature	85° C
Electrical cycles	100.000



3550 series

The 3550 series is equipped with 2 meters long wire and three micro pushbuttons, one for the nurse call and two for the lightings of the lights.

The micro pushbutton can be connected in three different ways:

- NO (Normally Open)
- NC (Normally Closed)
- NO+NC (Normally Closed in exchange)

Like all our hand-sets it can be equipped with different connectors and with led diode for the reassurance for maked call. Differently from the other han-sets, with the serie 3550, you can choose the color of the membrane: green, blue or orange are standard; on request we can consider other colors.

USE AND DESCRIPTION

Hand-set with three commands, one for the assistance request in patients ward for hospitals, clinics and old people's homes and two for the lightings of the visit light and ambient light.

Polycarbonate body, closing's screws not visibles to avoid tamperings from the end-users and segnalation throught membrane drawn with symbologies studied for an easier interpretation. Ergonomic design for an easier grip and cleaning.

Nominal power supply	12V/24V AC
Max current	1A
Protection degree	IP 67
Max temperature	85° C
Electrical cycles	100.000



2560 series

The 2560 series is equipped with 2 meters long wire and four micro pushbuttons, one for the nurse call, two for the lightings of the lights and one auxiliary.

The micro pushbuttons can be connected in three different ways:

- NO (Normally Open)
- NC (Normally Closed)
- NO+NC (Normally Closed in exchange)

Like all our hand-sets it can be equipped with different connectors and with led diode for the reassurance for maked call.

USE AND DESCRIPTION

Hand-set with four commands, one for the assistance request in patients ward for hospitals, clinics and old people's homes, two for the lightings of the visit light and ambient light and one auxiliary.

Polycarbonate body, closing's screws not visibles to avoid tamperings from the end-users and segnalation throught membrane drawn with symbologies studied for an easier interpretation. Ergonomic design for an easier grip and cleaning.

Nominal power supply	12V/24V AC
Max current	1A
Protection degree	IP 54
Max temperature	85° C
Electrical cycles	100.000



3560 series

The 3560 series is equipped with 2 meters long wire and four micro pushbuttons, one for the nurse call, two for the lightings of the lights and one auxiliary.

The micro pushbuttons can be connected in three different ways:

- NO (Normally Open)
- NC (Normally Closed)
- NO+NC (Normally Closed in exchange)

Like all our hand-sets it can be equipped with different connectors and with led diode for the reassurance for maked call. Differently from the other hand-sets, with the serie 3560, you can choose the color of the membrane: green, blue or orange are standard; on request we can consider other colors.

USE AND **DESCRIPTION**

Hand-set with four commands, one for the assistance request in patients ward for hospitals, clinics and old people's homes, two for the lightings of the visit light and ambient light and one auxiliary.

Polycarbonate body, closing's screws not visibles to avoid tamperings from the end-users and segnalation throught membrane drawn with symbologies studied for an easier interpretation. Ergonomic design for an easier grip and cleaning.

Nominal power supply	12V/24V AC
Max current	1A
Protection degree	IP 67
Max temperature	85° C
Electrical cycles	100.000



2570 series

The 2570 series is equipped with 2 meters long wire and five micro pushbuttons, one for the nurse call, two for the lightings of the lights and two arrows that could be used to opening /closing the shutters.

The micro pushbuttons can be connected in three different ways:

- NO (Normally Open)
- NC (Normally Closed)
- NO+NC (Normally Closed in exchange)

Like all our hand-sets it can be equipped with different connectors and with led diode for the reassurance for maked call.

USE AND DESCRIPTION

Hand-set with five commands, one for the assistance request in patients ward for hospitals, clinics and old people's homes, two for the lightings of the visit light and ambient light and two arrows that could be used to opening /closing the shutters. Polycarbonate body, closing's screws not visibles to avoid tamperings from the end-users and segnalation throught membrane drawn with symbologies studied for an easier interpretation. Ergonomic design for an easier grip and cleaning.

Nominal power supply	12V/24V AC
Max current	1A
Protection degree	IP 54
Max temperature	85° C
Electrical cycles	100.000



3570 series

The 3570 series is equipped with 2 meters long wire and five micro pushbuttons, one for the nurse call, two for the lightings of the lights and two arrows that could to opening / closing the shutters.

The micro pushbuttons can be connected in three different ways:

- NO (Normally Open)
- NC (Normally Closed)
- NO+NC (Normally Closed in exchange)

Like all our hand-sets it can be equipped with different connectors and with led diode for the reassurance for maked call. Differently from the other hand-set, with the serie 3570, you can choose the color of the membrane: green, blue or orange are standard; on request we can consider other colors.

USE AND DESCRIPTION

Hand-set with five commands, one for the assistance request in patients ward for hospitals, clinics and old people's homes, two for the lightings of the visit light and ambient light and two arrows that could be used to opening / closing the shutters. Polycarbonate body, closing's screws not visibles to avoid tamperings from the end-users and segnalation throught membrane drawn with symbologies studied for an easier interpretation. Ergonomic design for an easier grip and cleaning.

Nominal power supply	12V/24V AC
Max current	1A
Protection degree	IP 67
Max temperature	85° C
Electrical cycles	100.000



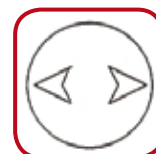
2600 series

The 2600 series is an hand-set that has the ability to compose the membrane with different serigraphies* and in different positions, depending on your needs, from one to five pushbuttons.

The micro pushbuttons can be connected in three different ways:

- NO (Normally Open)
- NC (Normally Closed)
- NO+NC (Normally Closed in exchange)

Like all our hand-sets it can be equipped with different connectors and with led diode for the reassurance for maked call.



USE AND DESCRIPTION

Sectional hand-set, from one to five commands, according to the various needs. Polycarbonate body, closing's screws not visibles to avoid tamperings from the end-users and segnalation throught membrane drawn with symbologies studied for an easier interpretation. Ergonomic design for an easier grip and cleaning.

Nominal power supply	12V/24V AC
Max current	1A
Protection degree	IP 54
Max temperature	85° C
Electrical cycles	100.000





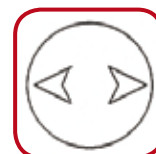
3600 series

The 3600 series is an hand-set that has the ability to compose the membrane with different serigraphies* and in different positions, depending on your needs, from one to five pushbuttons.

The micro pushbuttons can be connected in three different ways:

- NO (Normally Open)
- NC (Normally Closed)
- NO+NC (Normally Closed in exchange)

Like all our hand-sets it can be equipped with different connectors and with led diode for the reassurance for maked call. Differently from the other han-sets, with the serie 3600, you can choose the color of the membrane: green, blue or orange are standard; on request we can consider other colors.



USE AND DESCRIPTION

Sectional hand-set, from one to five commands, according to the various needs. Polycarbonate body, closing's screws not visibles to avoid tamperings from the end-users and segnalation throught membrane drawn with symbologies studied for an easier interpretation. Ergonomic design for an easier grip and cleaning.

Nominal power supply	12V/24V AC
Max current	1A
Protection degree	IP 67
Max temperature	85° C
Electrical cycles	100.000



AC 100/6 series

6 pin din socket to connect hand-set for nurse call and switching lights on the hospital bed head unit. Mounted on various types of electrical equipment, by a printed circuit board, reproduce the socket contacts to a numbered terminal for an easier connection to the electric system of the bed head unit.

Article code	Electrical equipment	Article code	Electrical equipment
AC-128/6	Flange socket - 2 locking rings with fixing hole Ø 23 mm		
AC-121/6	Bticino magic art. 5000	AC-136/6	Gewiss play bus art. 30901
AC-122/6-45	Legrand mosaic 45 mm art. 77070	AC-137/6-N	Vimar idea nero art. 16542
AC-122/6-45-2	Legrand mosaic 45 mm art. 77071	AC-137/6-B	Vimar idea bianco art. 16542-B
AC-123/6	Gewiss system art. 20056	AC-138/6	Legrand cross art. 680528
AC-123/6-N	Gewiss system art. 21056	AC-139/6	Vimar plana art. 14041
AC-124/6	Bticino living art. 4500	AC-139/6-SL	Vimar plana silver art. 14041.SL
AC-126/6	Vimar art. 8319	AC-140/6	Bticino luna art. C4950S
AC-127/6-N	Ave noir art. 45313	AC-141/6	Bticino magic TT art. A5000
AC-127/6-B	Ave blanc art. 45913	AC-142/6	Bticino matix art. AM5000
AC-127/6-R	Ave ral art. 45513	AC-143/6	Legrand vela nero art. 682769
AC-129/6	Vimar art. 10319	AC-144/6	ABB chiara art. 2CSK1601CH
AC-130/6	Bticino tekne art. 13900N	AC-145/6	Bticino axolute art. HC4950
AC-131/6	Legrand ergo art. 70160	AC-146/6	Bticino axolute art. HS4950
AC-132/6-N	Vimar idea nero art. 16540	AC-147/6	Ave banquise art. 45B13
AC-132/6-B	Vimar idea bianco art. 16540-B	AC-148/6	Gewiss chorus art. 10195
AC-133/6	Siemens grafit art. 5TG9447	AC-148/6-N	Gewiss chorus art. 12195
AC-134/6	Bticino living light art. N4950	AC-148/6-T	Gewiss chorus art. 14195
AC-134/6-NT	Bticino living tech art. N4950NT	AC-149/6	Vimar eikon art. 20041.B
AC-135/6	Bticino living intern. art. L4950		



CLICK series

Pull switch for the simple lighting light. It can be mounted on various types of electrical equipment and it is connected by screw terminals located inside of the key cover plug.

Article code	Electrical equipment	Article code	Electrical equipment
CLICK-121	Bticino magic art. 5000	CLICK-136	Gewiss play bus art. 30901
CLICK-122-45	Legrand mosaic 45 mm art. 77070	CLICK-137-N	Vimar idea nero art. 16542
CLICK-122-45-2	Legrand mosaic 45 mm art. 77071	CLICK-137-B	Vimar idea bianco art. 16542-B
CLICK-123	Gewiss system art. 20056	CLICK-138	Legrand cross art. 680528
CLICK-123-N	Gewiss system art. 21056	CLICK-139	Vimar plana art. 14041
CLICK-124	Bticino living art. 4500	CLICK-139-SL	Vimar plana silver art. 14041.SL
CLICK-126	Vimar art. 8319	CLICK-140	Bticino luna art. C4950S
CLICK-127-N	Ave noir art. 45313	CLICK-141	Bticino magic TT art. A5000
CLICK-127-B	Ave blanc art. 45913	CLICK-142	Bticino matix art. AM5000
CLICK-127-R	Ave ral art. 45513	CLICK-143	Legrand vela nero art. 682769
CLICK-129	Vimar art. 10319	CLICK-144	ABB chiara art. 2CSK1601CH
CLICK-130	Bticino tekne art. 13900N	CLICK-145	Bticino axolute art. HC4950
CLICK-131	Legrand ergo art. 70160	CLICK-146	Bticino axolute art. HS4950
CLICK-132-N	Vimar idea nero art. 16540	CLICK-147	Ave banquise art. 45B13
CLICK-132-B	Vimar idea bianco art. 16540-B	CLICK-148	Gewiss chorus art. 10195
CLICK-133	Siemens grafit art. 5TG9447	CLICK-148-N	Gewiss chorus art. 12195
CLICK-134	Bticino living light art. N4950	CLICK-148-T	Gewiss chorus art. 14195
CLICK-134-NT	Bticino living tech art. N4950NT	CLICK-149	Vimar eikon art. 20041.B
CLICK-135	Bticino living intern. art. L4950		





EQUI 100 series

Equipotential socket of earth connection for portable medical equipment directly to the hospital bed head unit. Possibility to insertion of standard connectors 6 mm diameter and 4 mm plugs. Contact, nuts and washers in nickel plated brass. This socket is mounted directly on various type of modular electric equipment.

Article code	Electrical equipment	Article code	Electrical equipment
EQUI-121	Bticino magic art. 5000	EQUI-136	Gewiss play bus art. 30901
EQUI-122-45	Legrand mosaic 45 mm art. 77070	EQUI-137-N	Vimar idea nero art. 16542
EQUI-122-45-2	Legrand mosaic 45 mm art. 77071	EQUI-137-B	Vimar idea bianco art. 16542-B
EQUI-123	Gewiss system art. 20056	EQUI-138	Legrand cross art. 680528
EQUI-123-N	Gewiss system art. 21056	EQUI-139	Vimar plana art. 14041
EQUI-124	Bticino living art. 4500	EQUI-139-SL	Vimar plana silver art. 14041.SL
EQUI-126	Vimar art. 8319	EQUI-140	Bticino luna art. C4950S
EQUI-127-N	Ave noir art. 45313	EQUI-141	Bticino magic TT art. A5000
EQUI-127-B	Ave blanc art. 45913	EQUI-142	Bticino matix art. AM5000
EQUI-127-R	Ave ral art. 45513	EQUI-143	Legrand vela nero art. 682769
EQUI-129	Vimar art. 10319	EQUI-144	ABB chiara art. 2CSK1601CH
EQUI-130	Bticino tekne art. 13900N	EQUI-145	Bticino axolute art. HC4950
EQUI-131	Legrand ergo art. 70160	EQUI-146	Bticino axolute art. HS4950
EQUI-132-N	Vimar idea nero art. 16540	EQUI-147	Ave banquise art. 45B13
EQUI-132-B	Vimar idea bianco art. 16540-B	EQUI-148	Gewiss chorus art. 10195
EQUI-133	Siemens grafit art. 5TG9447	EQUI-148-N	Gewiss chorus art. 12195
EQUI-134	Bticino living light art. N4950	EQUI-148-T	Gewiss chorus art. 14195
EQUI-134-NT	Bticino living tech art. N4950NT	EQUI-149	Vimar eikon art. 20041.B
EQUI-135	Bticino living intern. art. L4950		

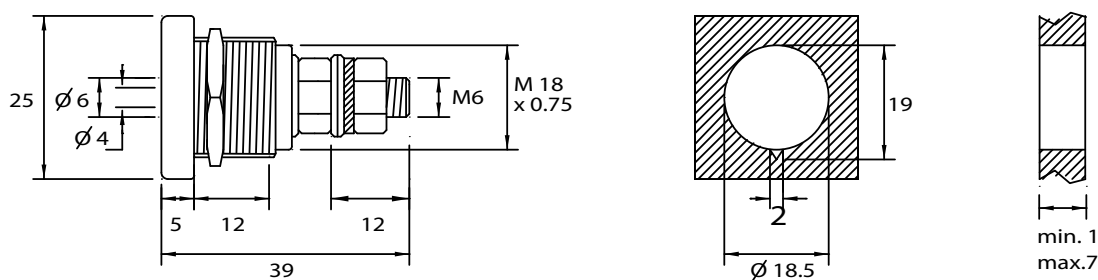


EQUI 300 series

Equipotential grounding outlet for the connection of portable medical equipment directly to the hospital bed head. Possibility of insertion of standard connectors 6 mm diameter and 4 mm plugs. Contact, nuts and washers in nickel plated brass.

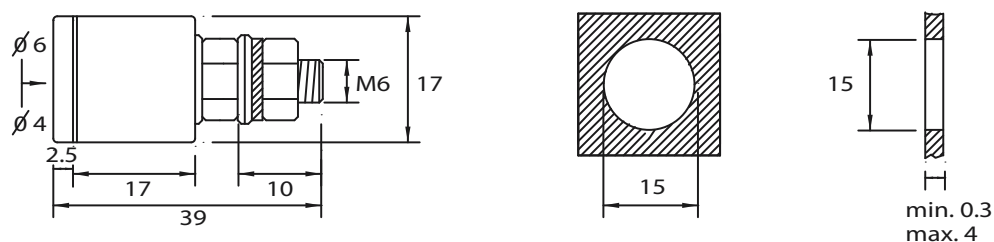
Article code: EQUI - 301 / N · EQUI - 301 / G

Polycarbonate black body with yellow/green serigraphy (EQUI-301/N) or alternatively grey (EQUI-301/G)

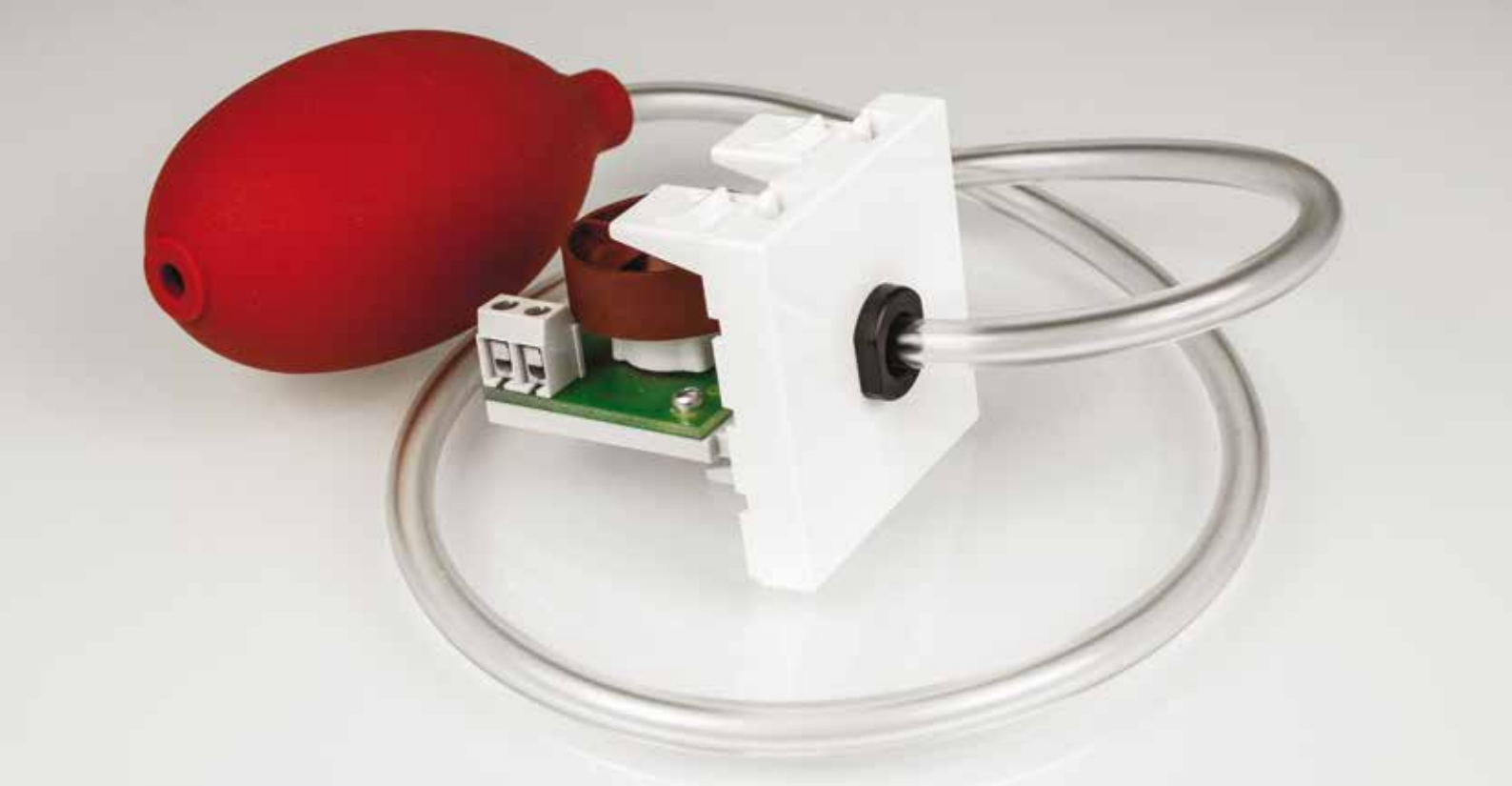


Article code: EQUI - 303

Nickel plated brass body with yellow/green serigraphy



Elledue
ELECTROMEDICAL EQUIPMENT COMPONENTS



PN 100 series

Pneumatic nurse call or emergency bath call. As our other products can be mounted on any type of modular electrical equipment and is connected by screw terminal located inside the key cover plug.

Article code	Electrical equipment	Article code	Electrical equipment
PN-121	Bticino magic art. 5000	PN-136	Gewiss play bus art. 30901
PN-122-45	Legrand mosaic 45 mm art. 77070	PN-137-N	Vimar idea nero art. 16542
PN-122-45-2	Legrand mosaic 45 mm art. 77071	PN-137-B	Vimar idea bianco art. 16542-B
PN-123	Gewiss system art. 20056	PN-138	Legrand cross art. 680528
PN-123-N	Gewiss system art. 21056	PN-139	Vimar plana art. 14041
PN-124	Bticino living art. 4500	PN-139-SL	Vimar plana silver art. 14041.SL
PN-126	Vimar art. 8319	PN-140	Bticino luna art. C4950S
PN-127-N	Ave noir art. 45313	PN-141	Bticino magic TT art. A5000
PN-127-B	Ave blanc art. 45913	PN-142	Bticino matix art. AM5000
PN-127-R	Ave ral art. 45513	PN-143	Legrand vela nero art. 682769
PN-129	Vimar art. 10319	PN-144	ABB chiara art. 2CSK1601CH
PN-130	Bticino tekne art. 13900N	PN-145	Bticino axolute art. HC4950
PN-131	Legrand ergo art. 70160	PN-146	Bticino axolute art. HS4950
PN-132-N	Vimar idea nero art. 16540	PN-147	Ave banquise art. 45B13
PN-132-B	Vimar idea bianco art. 16540-B	PN-148	Gewiss chorus art. 10195
PN-133	Siemens grafit art. 5TG9447	PN-148-N	Gewiss chorus art. 12195
PN-134	Bticino living light art. N4950	PN-148-T	Gewiss chorus art. 14195
PN-134-NT	Bticino living tech art. N4950NT	PN-149	Vimar eikon art. 20041.B
PN-135	Bticino living intern. art. L4950		



SG series

Spiral release for quick disconnection, 7 or 10 poles, to prevent the breakup of the hand-set connector or socket from the bed head in the event of accidental wrenching.

Article code: SG - 7P

Connector din 7 poles with ring nut clamping system

Socket	Din 7 poles
Cable	7 x 0,14 white flame resistant spiral CEI 20 - 22
Spiral diameter	mm 17
Length of tension	mm 730

Article code: SG - 10P

Connector din 10 poles with ring nut clamping system

Socket	Din 10 poles
Cable	10 x 0,14 white flame resistant spiral CEI 20 - 22
Spiral diameter	mm 17
Length of tension	mm 730





UCH 601 series

Control unit with a step relay for the control of a light on the hospital bed head.

Available also without cover, with visible resin transformer (UCH-601-R).

Article code: UCH - 601	
Control unit with 1 step relay	
Power supply:	230 V ac
Excitation relay:	24 V ac
Dimensions mm:	150 x 54 x 51 h
Out:	1 switch contact 10A 250V
Max power capacity:	6 VA
Control unit with:	1 NO pushbutton
Mounting distance:	140 mm
Article code: UCH - 601 - R	
Control unit with 1 step relay and 4,2 VA visible resin transformer	
Power supply:	230 V ac
Excitation relay:	24 V ac
Dimensions mm:	150 x 54 x 41 h
Out:	1 switch contact 10A 250V
Max power capacity:	4,2 VA
Control unit with:	1 NO pushbutton
Mounting distance:	140 mm



UCH 1611 series

Control unit with two step relays for the control of two lights on the hospital bed head.

Available also without cover, with visible resin transformer (UCH-1611-R).

Article code: UCH - 1611

Control unit with 2 step relays

Power supply:	230 V ac
Excitation relay:	24 V ac
Dimensions mm:	190 x 55 x 51 h
Out:	2 switch contacts 10A 250V
Max power capacity:	6 VA
Control unit with:	2 NO pushbutton
Mounting distance:	180 mm

Article code: UCH - 1611 - R

Control unit with 2 step relays and 4,2 VA visible resin transformer

Power supply:	230 V ac
Excitation relay:	24 V ac
Dimensions mm:	190 x 55 x 41 h
Out:	2 switch contacts 10A 250V
Max power capacity:	4,2 VA
Control unit with:	2 NO pushbutton
Mounting distance:	180 mm





UCH 1621 series

Control unit with a step relay to control a light on the hospital bed head and a pilot system with two relays for reassurance light maked call and cancellation call. Available also without cover, with visible resin transformer (UCH-1621 -R).

Article code: UCH - 1621

Control unit with 1 step relay and pilot system with 2 relays for reassurance light and cancellation call

Power supply:	230 V ac
Exitation relay:	24 V ac
Dimensions mm:	190 x 55 x 51 h
Out:	1 switch contact 10A 250V ; 1 contact NO for nurse call
Max power capacity:	6 VA
Control unit with:	2 NO pushbuttons and 1 NC pushbutton
Mounting distance:	180 mm

Article code: UCH - 1621 - R

Control unit with 1 step relay and pilot system with visible 4,2 VA resin transformer

Power supply:	230 V ac
Exitation relay:	24 V ac
Dimensions mm:	190 x 55 x 41 h
Out:	1 switch contact 10A 250V ; 1 contact NO for nurse call
Max power capacity:	4,2 VA
Control unit with:	2 NO pushbuttons and 1 NC pushbutton
Mounting distance:	180 mm



UCH 701 series

Electronic control unit with one relay for light control on hospital bed head unit.

Article code: UCH - 701

Electronic control unit with one relay

Power supply:	230 V ac
Excitation relay:	12 V cc
Max power capacity:	2,3 VA
Out:	1 switch contact 10A 250V
Control unit with:	1 NO pushbutton
Dimensions mm:	153 x 40 x 36 h
Mounting distance:	140





UCH 702 series

Electronic control unit with two relays for two lights control on hospital bed head unit.

Article code: UCH - 702	
Electronic control unit with two relays	
Power supply:	230 V ac
Exitation relay:	12 V cc
Max power capacity:	2,3 VA
Out:	2 switch contacts 10A 250V
Control unit with:	2 NO pushbuttons
Dimensions mm:	153 x 40 x 36 h
Mounting distance:	140



UCH 703 series

Electronic control unit with three relays for three lights control on hospital bed head unit.

Article code: UCH - 702

Electronic control unit with three relays

Power supply:	230 V ac
Excitation relay:	12 V cc
Max power capacity:	2,3 VA
Out:	3 switch contacts 10A 250V
Control unit with:	3 NO pushbuttons
Dimensions mm:	153 x 40 x 36 h
Mounting distance:	140



Elledue
ELECTROMEDICAL EQUIPMENT COMPONENTS

